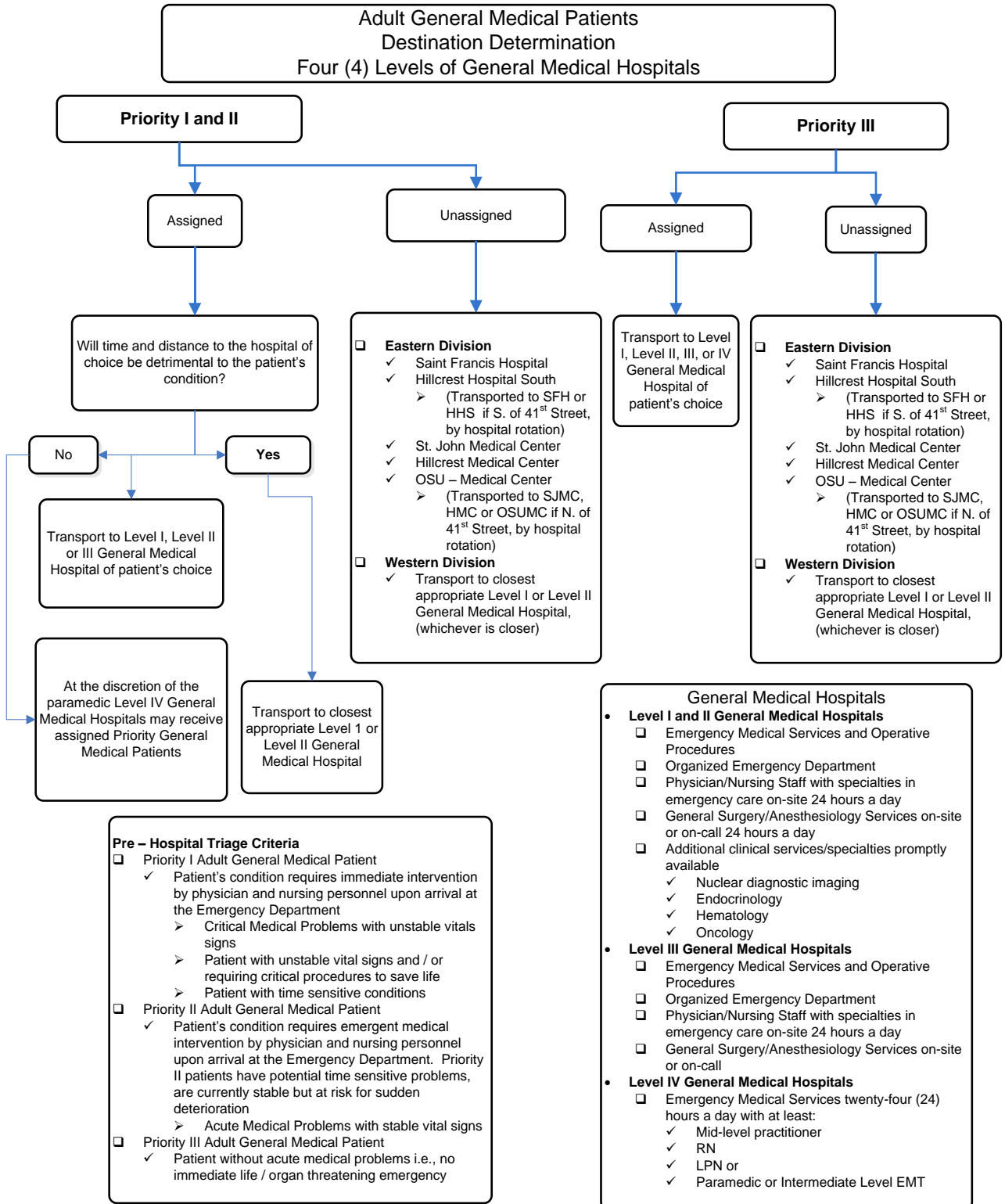




EMS System for Metropolitan Oklahoma City and Tulsa 2015 Medical Control Board Treatment Protocols

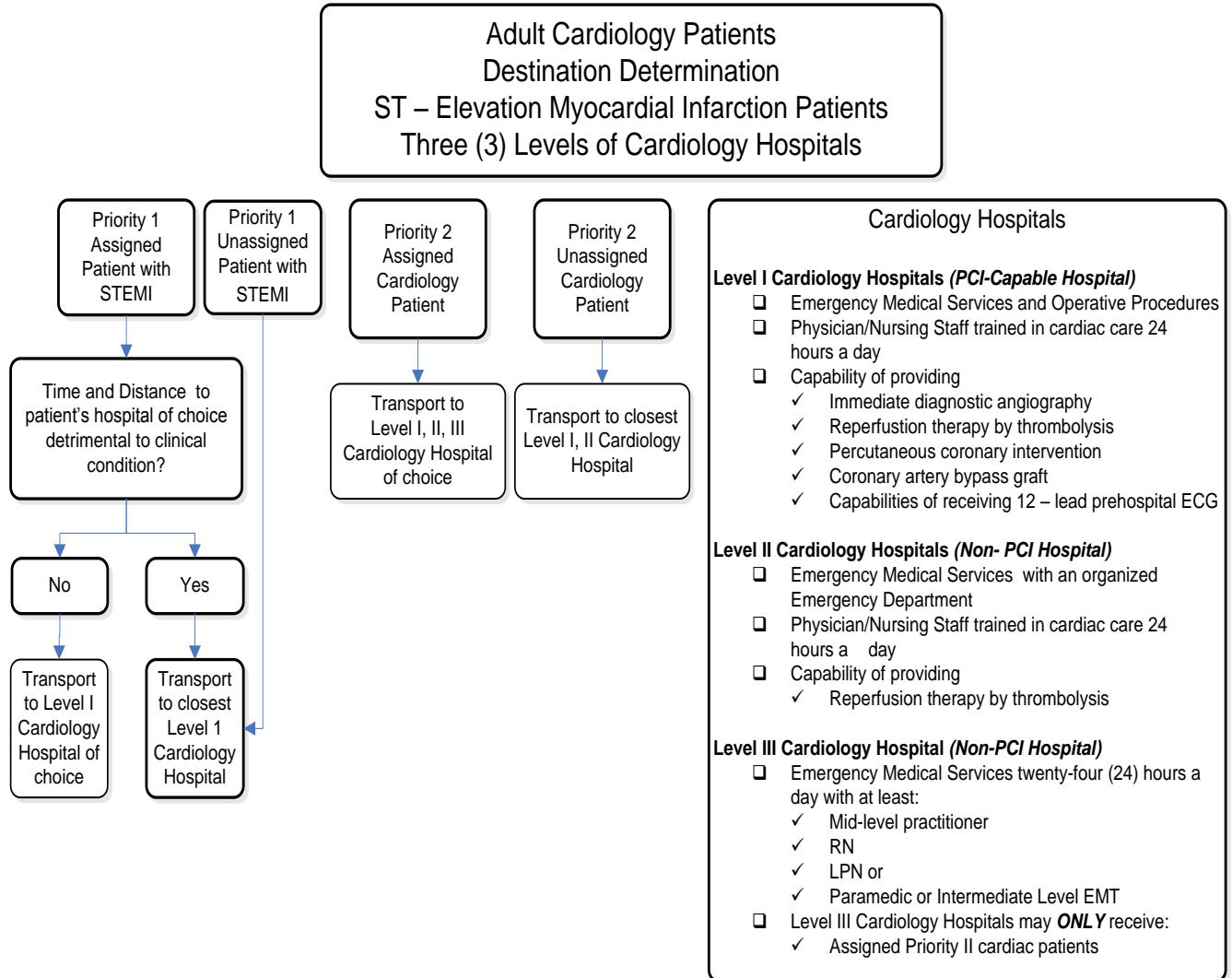
Approved 11/12/14, Effective 1/15/15, replaces 9/15/12 and all prior versions
PROTOCOL 17A: Destination Determination – Adult General Medical Patients





EMS System for Metropolitan Oklahoma City and Tulsa 2015 Medical Control Board Treatment Protocols

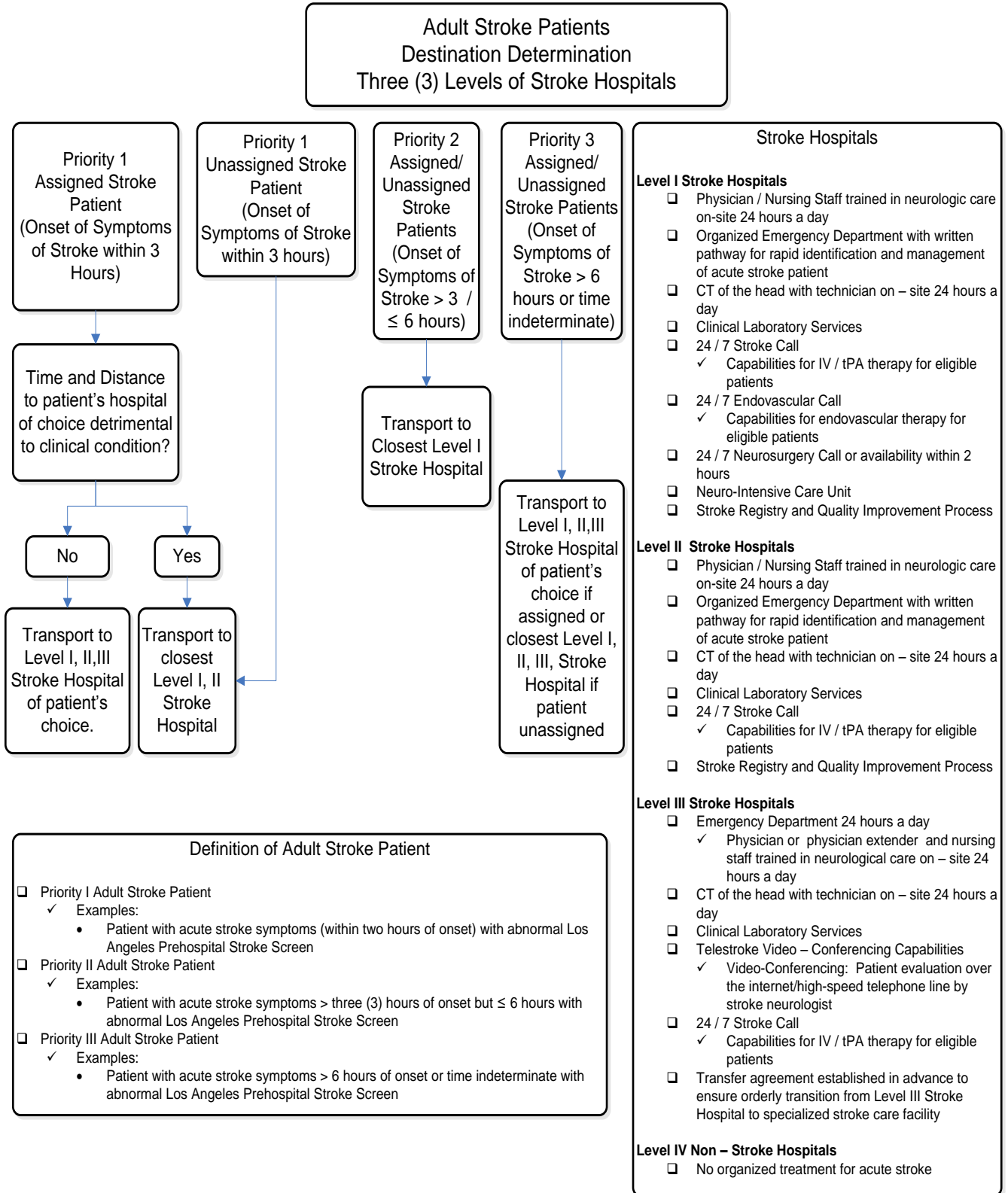
Approved 11/12/14, Effective 1/15/15, replaces 9/5/12 and all prior versions
PROTOCOL 17A: Destination Determination – Adult Cardiology Patients





EMS System for Metropolitan Oklahoma City and Tulsa 2015 Medical Control Board Treatment Protocols

Approved 11/12/14, Effective 1/15/15, replaces 9/5/12 and all prior versions
PROTOCOL 17A: Destination Determination – Adult Stroke Patients



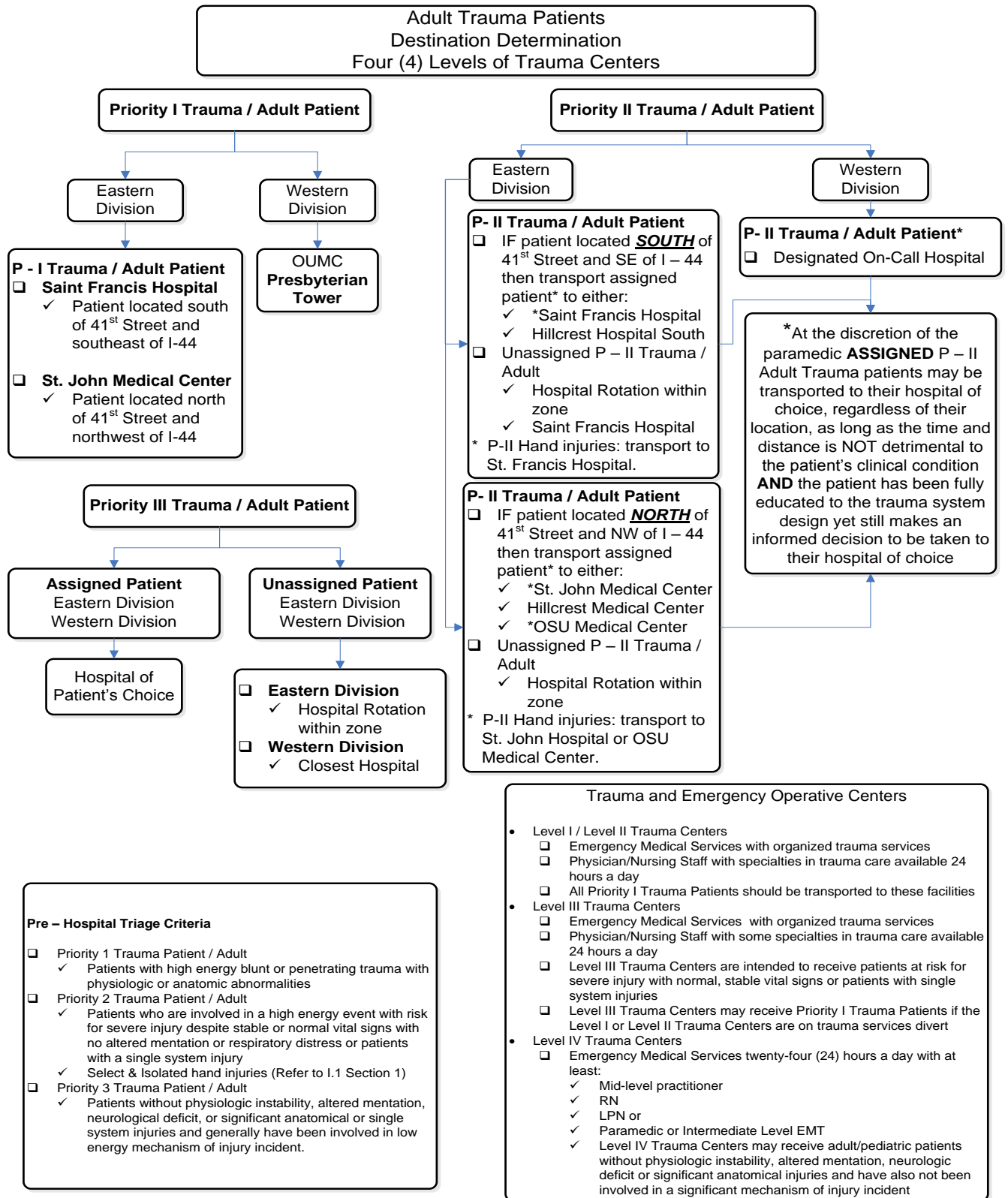
Definition of Adult Stroke Patient

- Priority I Adult Stroke Patient
 - ✓ Examples:
 - Patient with acute stroke symptoms (within two hours of onset) with abnormal Los Angeles Prehospital Stroke Screen
- Priority II Adult Stroke Patient
 - ✓ Examples:
 - Patient with acute stroke symptoms > three (3) hours of onset but ≤ 6 hours with abnormal Los Angeles Prehospital Stroke Screen
- Priority III Adult Stroke Patient
 - ✓ Examples:
 - Patient with acute stroke symptoms > 6 hours of onset or time indeterminate with abnormal Los Angeles Prehospital Stroke Screen



EMS System for Metropolitan Oklahoma City and Tulsa 2015 Medical Control Board Treatment Protocols

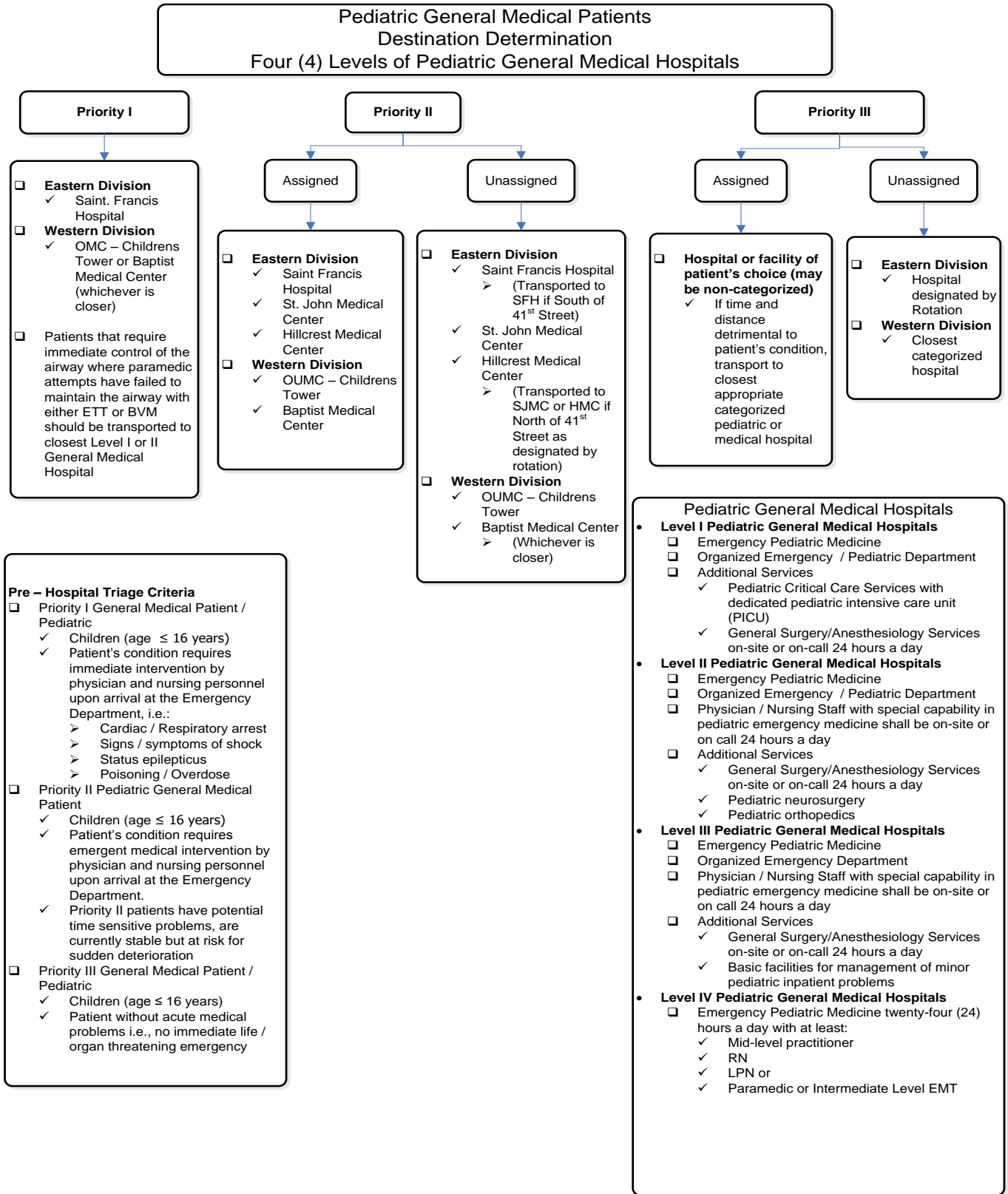
Approved 11/12/14, Effective 1/15/13, replaces 4/1/10 and all prior versions
PROTOCOL 17A: Destination Determination – Adult Trauma Patients





EMS System for Metropolitan Oklahoma City and Tulsa 2015 Medical Control Board Treatment Protocols

Approved 9/5/12, Effective 1/15/13, replaces 4/1/10 and all prior versions
PROTOCOL 17A: Destination Determination– Pediatric General Medical Patients





EMS System for Metropolitan Oklahoma City and Tulsa 2015 Medical Control Board Treatment Protocols

Approved 11/12/14, Effective 1/15/15, replaces 9/5/12 and all prior versions
PROTOCOL 17A: Destination Determination – Pediatric Trauma Patients

